



Small  
Grants...

**BIG IMPACT**

# IMPACT REPORT 2016

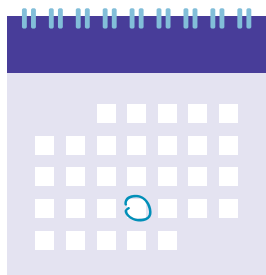
[www.glasspool.org.uk](http://www.glasspool.org.uk)

 **Glasspool**  
Charity Trust

## ABOUT US



We award small one-off grants to people in financial need.



We provide short-term help, but look to the future to continuously improve what we do and the impact we make.



We accept applications from referral agencies on behalf of individuals.



We are one of the few national grant-making charities that has no restrictions on who we can support, other than a requirement to demonstrate financial need.

## ABOUT OUR PARTNERS

Our support partners assess each client's needs and apply on their behalf to us. Last year we worked with over **1500** organisations and **4000** support workers.

“I find the application process easy to use. It allows me to follow the application as it's processed. I have always found Glasspool professional, proficient and understanding to the situations often faced with clients who sit on the edge of our society, allowing front line support workers the ability to give our clients a better chance to change their lives.”

**Naomi Holden**  
Housing Support Worker, Horton Housing  
Outstanding Landlord of the Year, UK Housing Awards 2016

During the year, we had the generous support of The Worshipful Companies of Mercers' and Goldsmiths. Their financial support of **£55,000** enables us to help around **220** households each year who are experiencing material poverty and social deprivation.

“We are delighted to have been working with the RL Glasspool Charity Trust for more than 10 years. The Trust has done a first-class job in managing our Block Grant Programme; helping to distribute funds to people in difficult circumstances.”

**Mimi Phun**  
Grants Officer – Charities  
The Mercers' Company

By working with others we can achieve more. We are always looking to form new partnerships and develop collaborative initiatives so our small grants can make a big impact.



We were established in 1939 with an endowment from Richard Louveteau Glasspool, a Hertfordshire businessman and philanthropist.

## REGISTER WITH US

If you are a support organisation and would like to apply for a grant you will need to register with us on

[www.grantsplus.org.uk](http://www.grantsplus.org.uk)



## PRESENTING ISSUES

Individuals requiring support from **Glasspool** are experiencing a range of challenging life circumstances. In addition to basic financial need, the issues most common to our applicants are poor mental health and domestic violence, and sometimes both.

Of the **5916 grants we awarded**, the following were the highest presenting issues identified.

**1139**

grants were awarded to individuals living with **POOR MENTAL HEALTH**



**741**

grants were awarded to individuals who have been or are subject to **DOMESTIC VIOLENCE**



**627**

grants were awarded to individuals who are **HOMELESS**



**600**

grants were awarded to individuals who are living with a **PHYSICAL ILLNESS**



**573**

grants were awarded to individuals who are living with a **PHYSICAL DISABILITY**



**297**

grants were awarded to individuals going through **FINANCIAL HARDSHIP ALONE**



## WHAT WE DID LAST YEAR

Over the year we have awarded **5916 grants** that helped over **9000 people in need**.

**95** of these grants went towards **vocational training** leading to employment. Sometimes the only barrier for a prisoner to move into employment on leaving prison, is obtaining a ticket to work (a vocational qualification).

### WE HAVE AWARDED:



**1526**  
cookers



**1503**  
washing machines



**965**  
fridge/  
freezers



**873**  
beds or  
bedding



**496**  
other domestic appliances



**278**  
grants for  
clothing



**108**  
grants for  
baby needs

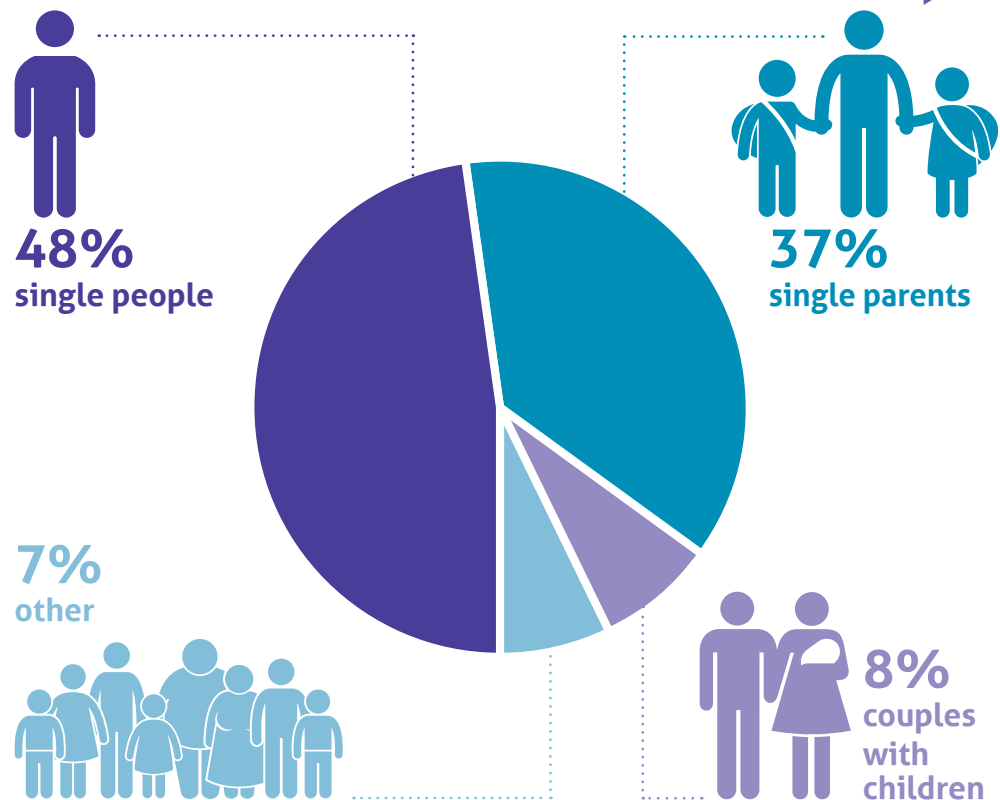


George received support from his local CAB to access his benefit entitlements, but he was still living on a low income. He spent a large amount eating out as he did not have a cooker. He had no savings and did not want to get back into debt, which had contributed to his depression. We were able to award him a grant for a much needed cooker.

“ I was given a cooker. I had never used one before and I am thoroughly enjoying learning how to cook. I did not expect this, but it has provided me with a hobby. I have money left over now that I don't have to eat out all the time, so I have opened a savings account and put a few pounds in every week. ”

George

## THE PEOPLE WE HAVE HELPED



## THE DIFFERENCE WE MAKE

### WE HAVE HELPED PEOPLE TO:

- Stabilise their **lives**
- Maintain their **tenancies**
- Improve their **financial situation**
- Improve their **physical or mental well-being**
- Improve their **independence**
- Sustain or build a **family life**
- Take up **employment**

Through a joint grant of **£600** **Glasspool** and the **Royal London Society** enabled a prisoner to undertake vocational training in personal track safety. He passed the course and is now **working full-time**, earning **£22,000 a year**.

“The bed will enable the parents to finally get a good night’s sleep and be able to function on a much better level improving the family’s emotional well being.”



Malia left her husband who was physically, verbally, and emotionally abusive to her. She obtained a flat from her local authority and managed to attain a cooker and a fridge/freezer via a local welfare grant, but this did not stretch to a washing machine. She is a small lady who is very frail and she found it impossible to wash clothes by hand. She intends to build a new life and make a home where her children can come and stay and eventually live with her. We were able to award a grant for a washing machine.

“This has made a huge difference to me and I am looking forward to having my children to stay and being able to look after them properly and send them back home with clean clothes.”

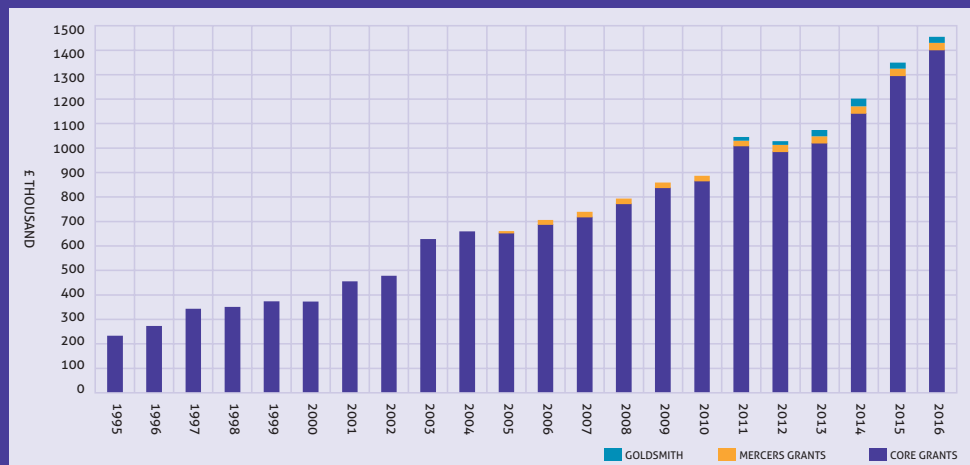
Malia



# FINANCIAL INFORMATION

TOTAL GRANTS AWARDED (£) FROM 1995 – 2016

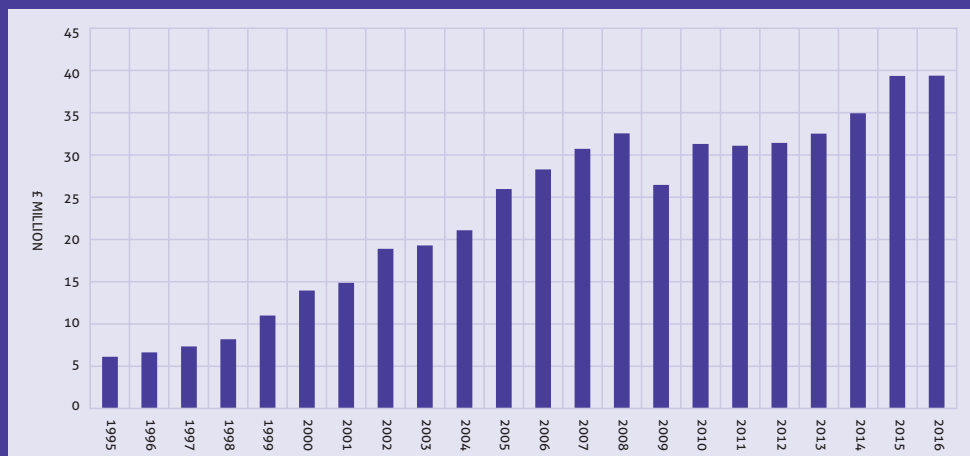
YEARS ENDING 31 MARCH



This year we made **5916** grants totalling **£1,455,457** up **8%** on last year. Over the last 21 years the number of individuals we have helped has increased by nearly **7% p.a.**

TOTAL FUNDS VALUE (ASSETS) FROM 1995 – 2016

YEARS ENDING 31 MARCH



**R L Glasspool Charity Trust**  
 2nd Floor, Saxon House, 182 Hoe Street,  
 Walthamstow, London E17 4QH  
 Email: [grants@glasspool.org.uk](mailto:grants@glasspool.org.uk)  
 Phone: 020 3141 3161

[www.glasspool.org.uk](http://www.glasspool.org.uk)

Charity Reg. No. 214648